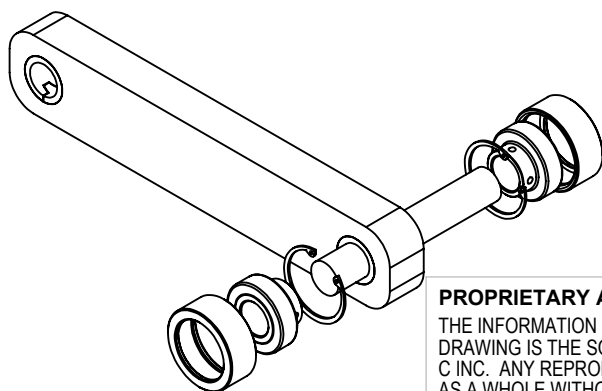
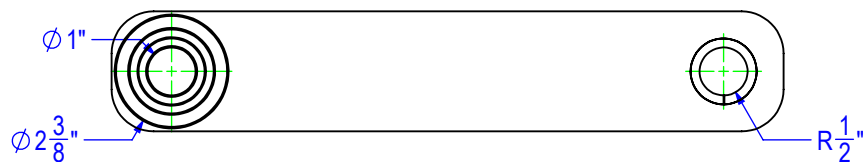
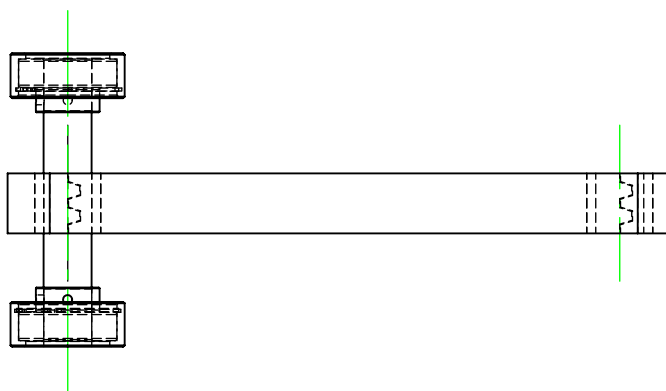
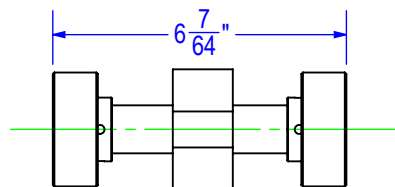
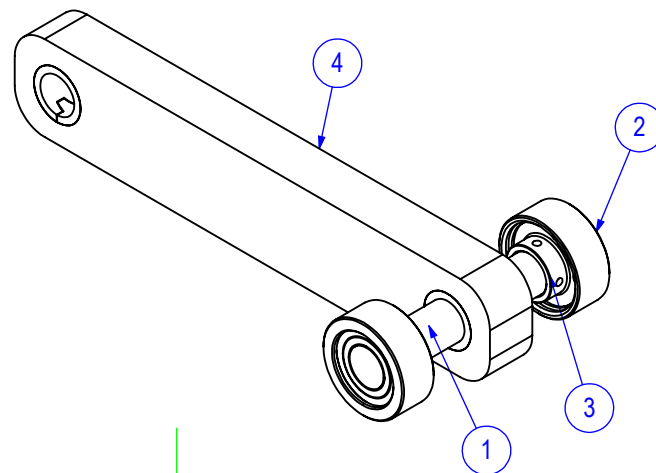
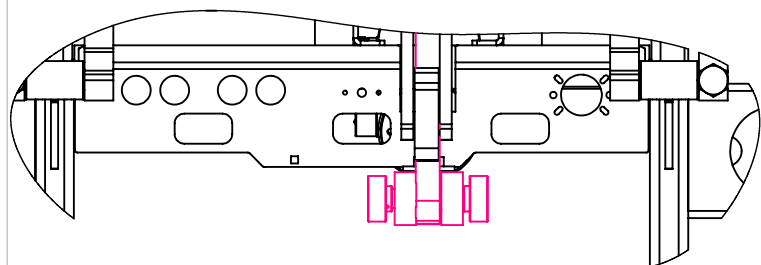


ITEM NO.	PART NUMBER	DESCRIPTION	MATERIAL	DRAWING #	Default t/QTY.
1	RE-PN-1X600	PIN, BEARING, HYDRA BED	STC-CR x 4142- ROCKWELL HARDNESS OF 30	10-1706	1
2	FP-RS-1000	ROLLER SLEEVE, HYDRA BED	12L14, OR APPROVED EQUIVALENT	10-2702	2
3	MI-YA100RR	MAIN LIFT CYLINDER ROLLER, SEALED BEARING		STOCK	2
4	RE-LB-125	LINKAGE BAR (1-1/4")		10-1702	1
5	HD-RSI .06x2.000	SNAP RING, INTERNAL	SAE 1060-1090	STOCK	2

REVISIONS			
REV.	DESCRIPTION	DATE	APPROVED
A	INITIAL RELEASE	12/17/2015	



PROPRIETARY AND CONFIDENTIAL
THE INFORMATION CONTAINED IN THIS DRAWING IS THE SOLE PROPERTY OF TRIPLE C INC. ANY REPRODUCTION IN PART OR AS A WHOLE WITHOUT THE WRITTEN PERMISSION OF TRIPLE C, INC IS PROHIBITED.

UNLESS OTHERWISE SPECIFIED:
DIMENSIONS ARE IN INCHES
TOLERANCES:
FRACTIONAL $\pm 1/16$
ANGULAR: MACH ± 1 BEND \pm
TWO PLACE DECIMAL $\pm .010$
THREE PLACE DECIMAL $\pm .005$

MATERIAL
DO NOT SCALE DRAWING

NAME	DATE
CAITLYN	12/18/2015
PART #	RE-KLR-1250
ASM #	

COMMENTS:

**KIT LINK REPAIR
1.25, HYDRA BED**

P.O. BOX 248, SABETHA, KS 66534
(785) 284-3674 FAX (785) 284-3931

TRIPLE C
INC

SIZE	DWG. NO.	REV
A	10-1717	A
SCALE: 1:4	WEIGHT: 14.23	SHEET 1 OF 1